



181 US Hwy 46
Mine Hill, NJ 07803
(908) 654-8068
(800) 783-0567
Fax 908-654-8069

LEAD IN DRINKING WATER REPORT

Performed At:

Montclair Board of Education
Montclair, NJ Schools
Northeast Elementary School
Bradford Elementary School
Buzz Aldrin Middle School
Edgemont Montessori School
Watchung Elementary School
Woodman Field Complex
Montclair High School
George Ines School
Renaissance at Rand Middle School
Hillside School
Administration Building
Montclair Community Pre- K
Nishuane Elementary School
Glenfield Middle School
Charles H. Bullock School

Performed For:

Montclair Board of Education
Mr. Robert Kelley
22 Valley Rd.
Montclair, NJ 07042

Prepared By:

LEW Corporation
181 US Hwy 46
Mine Hill, NJ 07803

Phone (908) 654-8068
Fax (908) 654-8069
Website <http://www.LEWCorp.com>

Inspection Date: 2/19, 2/20, 2/21/2022
& 05/03/2022
Project Number: 220268

Table of Contents

Contact Information	3
Introduction	4
Sampling Methodology	4
Drinking Water Results	5
Recommendations	13
Additional Recommendations	14

Appendices

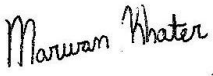
Appendix A	Exceedances
Appendix B	Recommendations
Appendix C	All results
Appendix D	Floor Plan(S)
Appendix E	Laboratory Data

Contact Information

Agency

Client Contact:	Mr. Robert Kelley
Client Name:	Montclair Board of Education
Street Address	22 Valley Rd. Montclair, NJ 07042
Phone Number:	(973) 509-4044

Risk Assessor(s)

Site Assessor(s):	Marwan Khater
Signature:	
Date:	March 15, 2022 & 05/11/2022
E-Mail	Mkhater@lewcorp.com

Firm

Organization:	LEW Corporation
Certification #:	NJDCA 00015 E
Street:	181 US Hwy 46
City, State & Zip:	Mine Hill, NJ 07803
Phone Number:	908-654-8068
Web Address:	http://www.lewcorp.com

Laboratory

Organization:	Environmental Hazard Services, LLC
Street:	7469 Whitepine Road
City, State & Zip:	Richmond, VA 23237
NJDEP Certification #	VA008
Phone Number:	800-347-4010

Introduction

LEW Corporation was contracted by Montclair Board of Education to test for the presence of lead in drinking water in 15 schools in the district.

Sampling Methodology

LEW Corporation followed the July 13, 2016 amendments to NJAC 6A:26. Full details on sampling practices can be found in Districts Sampling Plan.

All samples were collected in 250mL wide mouth plastic containers that was prepackaged by the analytical laboratory. The sample containers may contain nitric acid, if expedited analysis is required. If not, nitric acid will be added to each sample upon arrival at the laboratory. At each sample location, the first draw sample was taken after it was determined that the water had been standing in the plumbing system for greater than eight hours but less than forty-eight hours. If second draw samples were collected, they were collecting following a flushing protocol outlined in the District's Sampling Plan.

Drinking Water Results

On February 19- 20, 2022, LEW Corporation collected the following number of water samples:

Northeast Elementary School

- 10 first draw samples collected and 1 QAQC sample collected
- 1 sample above the 15ppb action level

Bradford Elementary School

- 7 first draw samples and 1 QAQC sample collected
- 0 samples above the 15ppb action level

Buzz Aldrin Middle School

- 5 first draw samples and 1 QAQC sample collected
- 0 samples above the 15ppb action level:

Edgemont Montessori School

- 5 first draw samples and 1 QAQC sample collected
- 0 samples above the 15ppb action level

Watchung Elementary School

- 7 first draw samples and 1 QAQC sample collected
- 0 samples above the 15ppb action level

Woodman Field Complex

- 8 first draw samples and 1 QAQC sample collected
- 0 samples above the 15ppb action level

Montclair High School

- 25 first draw samples and 1 QAQC sample collected
- 1 sample above the 15ppb action level

George Ines School

- 4 first draw samples and 1 QAQC sample collected
- 0 samples above the 15ppb action level

Renaissance at Rand Middle School

- 7 first draw samples and 1 QAQC sample collected
- 0 samples above the 15ppb action level

Hillside School

- 12 first draw samples and 1 QAQC sample collected
- 3 samples above the 15ppb action level

Administration Building

- 4 first draw samples and 1 QAQC sample collected
- 0 samples above the 15ppb action level

Montclair Community Pre- K

- 12 first draw samples
- 0 samples above the 15ppb action level

Nishuane Elementary School

- 5 first draw samples and 1 QAQC sample collected
- 0 samples above the 15ppb action level

Glenfield Middle School

- 10 first draw samples and 1 QAQC sample collected
- 0 samples above the 15ppb action level

Charles H. Bullock School

- 14 first draw samples and 1 QAQC sample collected
- 2 samples above the 15ppb action level

On May 3rd , 2022, LEW Corporation collected the following number of water samples:

Northeast Elementary School

- 1 second draw sample collected and 1 QAQC sample collected
- 0 sample above the 15ppb action level

Montclair High School

- 1 second draw sample and 1 QAQC sample collected
- 0 sample above the 15ppb action level

Hillside School

- 3 second draw samples and 1 QAQC sample collected
- 1 samples above the 15ppb action level

Charles H. Bullock School

- 2 second draw samples and 1 QAQC sample collected
- 2 samples above the 15ppb action level

The complete list of samples that exceeded the 15ppb limit can be found in Appendix A. The complete list of all sample results can be found in Appendix C. The laboratory results can be found in Appendix E.

Certain outlets could not or were not tested due to various reasons. The following table lists those locations and the reason why samples were not collected.

School	Sample Location	Reason for not testing.
Bradford Elementary School	R2	Disabled
Bradford Elementary School	R1	Disabled
Bradford Elementary School	Hall Nurse	Covered
Bradford Elementary School	Hall R4	Disabled
Bradford Elementary School	R8	Disabled
Bradford Elementary School	Hall R8	Covered
Bradford Elementary School	R8	Disabled

Bradford Elementary School	R9	Disabled
Bradford Elementary School	R10	Disabled
Bradford Elementary School	R11	Disabled
Bradford Elementary School	R21	Disabled
Bradford Elementary School	Hall R21	Disabled
Bradford Elementary School	R17	Disabled
Bradford Elementary School	R18	Disabled
Bradford Elementary School	Hall R16	Disabled
Bradford Elementary School	Hall R12	Covered
Bradford Elementary School	R20	Covered
Bradford Elementary School	R19	Covered
		Covered
Buzz Aldrin Middle School	Hall R21	
		Covered
Bradford Elementary School	Hall R21	
		Covered
Bradford Elementary School	Girls' locker room	
		Covered
Bradford Elementary School	Girls' locker room	
		Covered
Bradford Elementary School	Hall Cafeteria	
		Covered
Bradford Elementary School	Teachers' lounge	
		Covered
Bradford Elementary School	Hall R102	
		Covered
Bradford Elementary School	Hall R102	
		Covered
Bradford Elementary School	Hall R105	
		Covered
Bradford Elementary School	Gym	
		Covered
Bradford Elementary School	Hall R110	
		Covered
Bradford Elementary School	Hall R110	
		Covered
Bradford Elementary School	Hall R115	
		Covered
Bradford Elementary School	Hall R217	
		Covered
Bradford Elementary School	Hall R210	
		Covered
Bradford Elementary School	Hall R201	
Bradford Elementary School	Hall R201	Covered

Bradford Elementary School	Hall R208	Covered
Montclair Community PRE-K	Rm 5	Covered
Montclair Community PRE-K	Rm 6	Covered
Edgemont Elementary School	Hall R5	Covered
Edgemont Elementary School	Hall R21	Disabled
Edgemont Elementary School	Stairwell E	Disabled
Edgemont Elementary School	R13	Disabled
Edgemont Elementary School	R115	Disabled
Edgemont Elementary School	R114	Disabled
Edgemont Elementary School	Hall R110	Covered
Edgemont Elementary School	Hall R107	Disabled
Edgemont Elementary School	Playground	Disabled
Hillside Elementary School	Hall by Rm2	Disabled
Hillside Elementary School	Hall by Rm2	Disabled
Hillside Elementary School	Gymnastics Gym	Disabled
Hillside Elementary School	Gymnastics Gym	Disabled
Hillside Elementary School	Hall by Rm 21	Disabled
Hillside Elementary School	Hall by Rm 21	Disabled
Hillside Elementary School	Hall by Rm 2	Disabled
Hillside Elementary School	Cafeteria	Disabled
Hillside Elementary School	Hall R102	Disabled
Hillside Elementary School	R126	Disabled
Hillside Elementary School	Rm124	Disabled
Hillside Elementary School	Hall R121	Covered
Hillside Elementary School	Hall R202	Covered
Hillside Elementary School	Hall R221	Covered
Hillside Elementary School	R227	Disabled
Hillside Elementary School	R24A	Disabled

Glenfield Middle School	Boys Locker room	Disabled
Glenfield Middle School	Girls Locker room	Disabled
Glenfield Middle School	Hall R126	Disabled
Glenfield Middle School	Hall R126	Covered
Glenfield Middle School	Hall R134	Disabled
Glenfield Middle School	Hall R134	Disabled
Glenfield Middle School	Auditorium, Left	Covered
Glenfield Middle School	Auditorium, right	Covered
Glenfield Middle School	Hall R216	Covered
Glenfield Middle School	Hall R237	Covered
Glenfield Middle School	Hall R335, left	Covered
Glenfield Middle School	Hall R335, right	Covered
Glenfield Middle School	Hall R319	Covered
Glenfield Middle School	Lefrano Gill	Covered
George Inness School	Hall Across R407	Disabled
George Inness School	Cafeteria, Left	Covered
George Inness School	Cafeteria, middle	Covered
George Inness School	Cafeteria, right	Covered
George Inness School	Kitchen	No Ice
George Inness School	Girls Locker room	Covered
George Inness School	Hall R5019	Covered
George Inness School	Hall R525	Covered
George Inness School	Hall Across R613	Covered
George Inness School	Hall Across R605	Covered
George Inness School	Hall Across Teachers' Lounge	Covered
North East Elementary School	Hall RM 11	Covered
North East Elementary School	RM 8	Covered
North East Elementary School	Hall RM 13	Covered
North East Elementary School	RM 14	Covered
North East Elementary School	RM 32	Covered
North East Elementary School	RM 28	Covered
North East Elementary School	RM 27	Covered
North East Elementary School	RM 26	Covered
North East Elementary School	RM 25	Covered
North East Elementary School	Hall R28	Covered
North East Elementary School	Hall R21	Covered
North East Elementary School	Hall R21	Covered
Nishuane Elementary School	Hall RB111	Covered

Nishuane Elementary School	Hall RB113	Covered
Nishuane Elementary School	Storage Room 2	Covered
Nishuane Elementary School	Stairwell 1	Covered
Nishuane Elementary School	Stairwell 1	Covered
Nishuane Elementary School	Hall Teacher Lounge	Covered
Nishuane Elementary School	R109	Covered
Nishuane Elementary School	R211A	Covered
Nishuane Elementary School	R213	Covered
Nishuane Elementary School	R203	Covered
Nishuane Elementary School	Playground	Covered
Renaissance Middle School	Hall RG17	Covered
Renaissance Middle School	Hall R110	Covered
Renaissance Middle School	Hall R117	Covered
Renaissance Middle School	Hall R205	Covered
Renaissance Middle School	Hall R217	Disabled
Renaissance Middle School	Courtyard	Disabled
Watchung Elementary School	Hall R31	Covered
Watchung Elementary School	Hall R19	Covered
Watchung Elementary School	Hall R06	Covered
Watchung Elementary School	Hall R07	Covered
Watchung Elementary School	R17	Covered
Watchung Elementary School	Hall R16	Covered
Watchung Elementary School	Field	Disabled
Watchung Elementary School	hall RM03	Disabled
Woodman Field Complex	1st FL Weight Room	Covered

Woodman Field Complex	1st FL Weight Room	Covered
Woodman Field Complex	2nd FL Weight Room	Covered
Woodman Field Complex	2nd FL Weight Room	Covered
Woodman Field Complex	2nd FL JV LR	Disabled
Woodman Field Complex	2nd FL V LR	Disabled
Woodman Field Complex	Concession Room	Disabled
Woodman Field Complex	Concession Room	Disabled
Woodman Field Complex	Softball Field	Disabled
Woodman Field Complex	Baseball 3rd	Disabled
Woodman Field Complex	Baseball 3rd	Disabled
Woodman Field Complex	Baseball 1st	Disabled
Woodman Field Complex	Baseball 1st	Disabled
Montclair Highschool	Hall G-floor GB	Disabled
Montclair Highschool	G-floor Boy's locker room	Disabled
Montclair Highschool	Woodshop R14	Disabled
Montclair Highschool	Auto shop R17	Disabled
Montclair Highschool	Hall R16	Disabled
Montclair Highschool	Auditorium	Disabled
Montclair Highschool	North Gallery	Disabled
Montclair Highschool	Hall R111	Disabled
Montclair Highschool	Student Café	Disabled
Montclair Highschool	Drivers Education	Disabled
Montclair Highschool	Main Gym	Disabled
Montclair Highschool	Main Gym	Disabled
Montclair Highschool	Gym Lobby-Boy's bath	Disabled
Montclair Highschool	Gym Lobby-Girl's bath	Disabled
Montclair Highschool	Small Gym	Disabled
Montclair Highschool	Kitchen	No Ice
Montclair Highschool	Hall R109	Disabled

Montclair Highschool	Hall R109	Disabled
Montclair Highschool	CST	Disabled
Montclair Highschool	Hall R207	Disabled
Montclair Highschool	Hall R219	Disabled
Montclair Highschool	Hall R216	Disabled
Montclair Highschool	Hall R213	Disabled
Montclair Highschool	Hall R317	Disabled
Montclair Highschool	Hall R312	Disabled
Charles H. Bullock School	R124	Covered
Charles H. Bullock School	R126	Covered
Charles H. Bullock School	R128	Covered
Charles H. Bullock School	R130	Covered
Charles H. Bullock School	R135	Covered
Charles H. Bullock School	R131	Covered
Charles H. Bullock School	Hall R118, Left	Covered
Charles H. Bullock School	Hall R118, Right	Covered
Charles H. Bullock School	R120	Covered
Charles H. Bullock School	R118	Covered
Charles H. Bullock School	Gym	Covered
Charles H. Bullock School	Gym	Covered
Charles H. Bullock School	R116	Covered
Charles H. Bullock School	R114	Covered
Charles H. Bullock School	R106	Covered
Charles H. Bullock School	R108	Covered
Charles H. Bullock School	R110	Covered
Charles H. Bullock School	R112	Covered
Charles H. Bullock School	R105	Covered
Charles H. Bullock School	Cafeteria	Covered
Charles H. Bullock School	Cafeteria	Covered
Charles H. Bullock School	Kitchen	No Ice
Charles H. Bullock School	R222	Covered

Charles H. Bullock School	R224	Covered
Charles H. Bullock School	R226	Covered
Charles H. Bullock School	R228	Covered
Charles H. Bullock School	R230	Covered
Charles H. Bullock School	R225	Covered
Charles H. Bullock School	Across R218	Covered
Charles H. Bullock School	Across R218	Covered
Charles H. Bullock School	R218	Covered
Charles H. Bullock School	R216	Covered
Charles H. Bullock School	R214	Covered
Charles H. Bullock School	R200	Covered
Charles H. Bullock School	R204	Covered
Charles H. Bullock School	R206	Covered
Charles H. Bullock School	R208	Covered
Charles H. Bullock School	R210	Covered
Administration Building	2nd FL Hall	Disabled
Administration Building	2nd FL Hall	Disabled

Recommendations

Those outlets where the first draw sample tested below 15ppb are not considered to be elevated and no mitigation is necessary.

For those outlets where the first draw sample exceeds 15ppb the following steps are recommended:

- 1) Immediately discontinue use of the outlets.
- 2) Conduct second draw (flush) samples on these outlets to further delineate source of contamination.

A complete list of recommendations per outlet can be found in Appendix B.

Additional Recommendations

- 1) Follow-up samples should be collected after any remediation efforts in order to determine the efficacy of the work.
- 2) Any of the inoperable/non-functioning outlets listed above that are brought back into service should be sample.
- 3) Comply with all requirements set forth in NJAC 6A:26.

Appendix A Exceedances

Building	Date Collected	Sample ID	Sample Location	Concentration ppb
North East	2/19/2022	5-NE-RM13-OF	RM 13	22.7
High School	2/20/2022	24-MHS-K-S1	Kitchen Sink	78.5
Hillside	2/20/2022	11-H-R104-S1	R104	17.4
Hillside	2/20/2022	12-H-R104-S2	R104	24.4
Hillside	2/20/2022	14-H-R104-S3	R104	60.5
Charles H. Bullock	2/21/2022	29-CB-K-PF	Kitchen	33.4
Charles H. Bullock	2/21/2022	34-CB-K-PF	Kitchen	31.7

Appendix A May 3, 2022 Exceedances

Building	Date Collected	Sample ID	Sample Location	Concentration ppb
Hillside	05/03/2022	14-H-R104-S3	R104	20.9
Charles H. Bullock	05/03/2022	29-CB-K-PF	Kitchen	24.2
Charles H. Bullock	05/03/2022	34-CB-K-PF	Kitchen	15.7

Appendix B Recommendations

Building	Sample Location	Concentration ppb	Recommendations
North East	RM 13	22.7	1) Immediately discontinue use of the outlets. 2) Conduct second draw (flush) samples on these outlets to further delineate source of contamination.
Hillside	R104	17.4	1) Immediately discontinue use of the outlets. 2) Conduct second draw (flush) samples on these outlets to further delineate source of contamination.
Hillside	R104	24.4	1) Immediately discontinue use of the outlets. 2) Conduct second draw (flush) samples on these outlets to further delineate source of contamination.
Hillside	R104	60.5	1) Immediately discontinue use of the outlets. 2) Conduct second draw (flush) samples on these outlets to further delineate source of contamination.
Charles H. Bullock	Kitchen	33.4	1) Immediately discontinue use of the outlets. 2) Conduct second draw (flush) samples on these outlets to further delineate source of contamination.
Charles H. Bullock	Kitchen	31.7	1) Immediately discontinue use of the outlets. 2) Conduct second draw (flush) samples on these outlets to further delineate source of contamination.
High School	Kitchen	78.85	1) Immediately discontinue use of the outlets. 2) Conduct second draw (flush) samples on these outlets to further delineate source of contamination.

May 6, 2022 Recommendations:

Building	Sample Location	Concentration ppb	Recommendations
Hillside	R104	20.9	Immediately stop use of these outlets. Replace the outlet and associated plumbing up to the wall connection, and install a lead filter at the wall connection. A filter maintenance plan will need to be implemented, in order to ensure that all filters are in proper working order.
Charles H. Bullock	Kitchen	24.2	Immediately stop use of these outlets. Replace the outlet and associated plumbing up to the wall connection, and install a lead filter at the wall connection. A filter maintenance plan will need to be implemented, in order to ensure that all filters are in proper working order
Charles H. Bullock	Kitchen	15.7	Immediately stop use of these outlets. Replace the outlet and associated plumbing up to the wall connection, and install a lead filter at the wall connection. A filter maintenance plan will need to be implemented, in order to ensure that all filters are in proper working order

Appendix C All Results

Watchung:

Sample ID	Collection Date	Collection Location	Concentration ug/L (ppb)
2-W-NURSE-S	2/19/2022	NURSE	<1.00
4-W-CAFÉ-BF	2/19/2022	HALL CAFÉ	<1.00
3-W-TL-S	2/19/2022	TEACHERS LOUNGE	<1.00
5-W-CAFÉ-WC	2/19/2022	HALL CAFÉ	<1.00
6-W-K-S	2/19/2022	KITCHEN	<1.00
7-W-R19-BF	2/19/2022	R19	<1.00
8-W-SR-BF	2/19/2022	SUNROOM	<1.00

Buzz Aldrin:

Sample ID	Collection Date	Collection Location	Concentration ug/L (ppb)
6-BA-K-S	2/19/2022	KITCHEN	<1.00
8-BA-HR102-BF	2/19/2022	HALL R102	<1.00
11-BA-NO-S	2/19/2022	NURSE	1.74
16-BA-R11S-BF	2/19/2022	R115	<1.00
19-BA-R217-BF	2/19/2022	R217	<1.00
20-BA-SR-BF	2/19/2022	SUNROOM	<1.00

Bradford:

Sample ID	Collection Date	Collection Location	Concentration ug/L (ppb)
3-BD-N-S	2/19/2022	NURSE	<1.00
4-BD-NURSE-BF	2/19/2022	HALL NURSE	<1.00
7-BD-TL-S	2/19/2022	TEACHERS LOUNGE	1.37
9-BD-K-S1	2/19/2022	KITCHEN	1.31
10-BD-K-S2	2/19/2022	KITCHEN	1.61
21-BD-R13-S	2/19/2022	ROOM 13	8.37
22-BD-R12-BF	2/19/2022	R12	<1.00
23-BD-SR-BF	2/19/2022	SUNROOM	<1.00

Edgemont:

Sample ID	Collection Date	Collection Location	Concentration ug/L (ppb)
1-ET-R5-BF	2/19/2022	HALL R5	<1.00
4-ET-STE-NF	2/19/2022	STAIRWELL E	<1.00
6-ET-K-S	2/19/2022	KITCHEN	<1.00
8-ET-R14-DF	2/19/2022	ROOM 14	9.67
13-ET-TL-S	2/19/2022	TEACHERS LOUNGE	1.53
14-ET-SR-S	2/19/2022	SUNROOM	<1.00

Woodman Field Complex:

Sample ID	Collection Date	Collection Location	Concentration ug/L (ppb)
1-WFC-GIRLSLR-WC	2/19/2022	1 ST FL GIRLS LR	<1.00
2-WFC-TR-IM	2/19/2022	TRAINERS ROOM	<1.00
2-WFC-TR-IM	2/19/2022	TRAINERS ROOM	<1.00
3-WFC-LR-S	2/19/2022	LAUNDRY ROOM	3.01
5-WFC-1WR-BF	2/19/2022	1 FL WEIGHT ROOM	<1.00
8-WFC-2WR-BF	2/19/2022	2 ND FL WEIGHT ROOM	<1.00
10-WFC-JV-DF	2/19/2022	2 ND FL JV LR	9.95
11-WFC-V-WC	2/19/2022	2 ND FL V LR	<1.00
12-WFC-SR-WC	2/19/2022	SUNROOM	<1.00

North East:

Sample ID	Collection Date	Collection Location	Concentration ug/L (ppb)
1-NE-K-S	2/19/2022	KITCHEN	<1.00
3-NE-RM11-BB	2/19/2022	RM11	<1.00
5-NE-RM13-OF	2/19/2022	RM13	22.7
6-NE-RM13-BF	2/19/2022	RM13	<1.00
9-NE-RM34-BB	2/19/2022	RM34	2.77
10-NE-RM33-BB	2/19/2022	RM33	<1.00
11-NE-RM32-BB	2/19/2022	RM32	<1.00
12-NE-RM30-BB	2/19/2022	RM30	1.84
18-NE-R28-BF	2/19/2022	R28	<1.00
21-NE-R21-OF	2/19/2022	R21	<1.00
22-NE-SR-DR	2/19/2022	SUNROOM	<1.00

George Ines:

Sample ID	Collection Date	Collection Location	Concentration ug/L (ppb)
5-GI-K-P	2/20/2022	KITCHEN	<1.00
7-GI-K-FP	2/20/2022	KITCHEN	<1.00
10-GI-R525-BF	2/20/2022	R525	<1.00
12-GI-NURSE-S	2/20/2022	NURSE	<1.00
13-GI-SR-S	2/20/2022	SUNROOM	<1.00

Nishuane:

Sample ID	Collection Date	Collection Location	Concentration ug/L (ppb)
3-N-K-S	2/21/2022	KITCHEN	<1.00
7-N-NO-S	2/21/2022	NURSE OFFICE	<1.00
8-N-TL-BF	2/21/2022	TEACHERS LOUNGE	<1.00
10-N-TL-S	2/21/2022	TEACHERS LOUNGE	1.08
16-N-K-S2	2/21/2022	KITCHEN	<1.00
17-N-SR-S3	2/21/2022	SUNROOM	<1.00

Administration Building:

Sample ID	Collection Date	Collection Location	Concentration ug/L (ppb)
1-AB-VH-WC	2/21/2022	VAULT HALL	<1.00
2-AB-VH-BF	2/21/2022	VAULT HALL	<1.00
5-AB-K-S	2/21/2022	KITCHEN	1.86
G-AB-BOC-S	2/21/2022	BR CLOSET	<1.00
7-AB-SR-S	2/21/2022	SUNROOM	<1.00

Renaissance Middle School:

Sample ID	Collection Date	Collection Location	Concentration ug/L (ppb)
1-RR-RG17-BF	2/20/2022	HALL RG17	<1.00
4-RR-R117-BF	2/20/2022	R117 HALL	<1.00
6-RR-K-S	2/20/2022	KITCHEN	<1.00
7-RR-R205-BF	2/20/2022	R205	<1.00
9-RR-217-BF	2/20/2022	R217	3.16
12-RR-NURSE-S	2/20/2022	NURSE	3.36
13-RR-TL-S	2/20/2022	TEACHERS LOUNGE	<1.00
14-RR-SR-S	2/20/2022	SUNROOM	<1.00

Hillside:

Sample ID	Collection Date	Collection Location	Concentration ug/L (ppb)
8-H-RM26-BF	2/20/2022	HALL RM26	<1.00
9-H-K-S	2/20/2022	KITCHEN	<1.00
11-H-R104-S1	2/20/2022	R104	17.1
13-H-R104-S3	2/20/2022	R104	7.46
12-H-R104-S2	2/20/2022	R104	24.4
14-H-R104-S3	2/20/2022	R104	60.5
15-H-R104-S5	2/20/2022	R104	7.54
16-H-R104-S6	2/20/2022	R104	4.38
18-H-R102-BF	2/20/2022	R102	<1.00
25-H-N-S	2/20/2022	NURSE	<1.00
26-H-WR-S	2/20/2022	WORK ROOM	3.52
28-H-R202-BF	2/20/2022	R202	<1.00
29-H-SR-BF	2/20/2022	SUNROOM	<1.00

Charles H Bullock:

Sample ID	Collection Date	Collection Location	Concentration ug/L (ppb)
15-CB-R100-S	2/21/2022	R100	<1.00
16-CB-NO-S	2/21/2022	NURSE OFFICE	<1.00
21-CB-R105-S	2/21/2022	ROOM 105	<1.00
22-CB-CAFÉ-BF	2/21/2022	CAFETERIA	<1.00
21-CB-CAFÉ-BF	2/21/2022	CAFETERIA	<1.00
26-CB-K-S	2/21/2022	KITCHEN	<1.00
28-CB-K-S	2/21/2022	KITCHEN	<1.00
29-CB-K-S	2/21/2022	KITCHEN	33.4
30-CB-K-S	2/21/2022	KITCHEN	1.61
31-CB-K-S	2/21/2022	KITCHEN	<1.00
32-CB-K-S	2/21/2022	KITCHEN	<1.00
33-CB-K-S	2/21/2022	KITCHEN	1.15
34-CB-K-S	2/21/2022	KITCHEN	31.7
41-CB-R221-S	2/21/2022	ROOM 221	<1.00
42-CB-SR-S	2/21/2022	SUNROOM	<1.00

Glenfield School:

Sample ID	Collection Date	Collection Location	Concentration ug/L (ppb)
3-GF-R113-S2	2/21/2022	R113	<1.00
2-GF-R113-S1	2/21/2022	R113	<1.00
4-GF-R113-S3	2/21/2022	R113	<1.00
5-GF-R113-S4	2/21/2022	R113	<1.00
13-GF-R216-BF	2/21/2022	R216	<1.00
17-SF-K-S	2/21/2022	KITCHEN	<1.00
15-GF-NURSE-S	2/21/2022	NURSE	<1.00
20-GF-R319-BF	2/21/2022	R319	<1.00
22-GF-LG-BF	2/21/2022	LG-LEFRANO GILL	<1.00
24-GF-K-PF	2/21/2022	KITCHEN	6.18
25-GF-SR-S	2/21/2022	SUNROOM	<1.00

Montclair Community Pre- K

Sample ID	Collection Date	Collection Location	Concentration ug/L (ppb)
1-MPK-NO-S	2/21/2022	NURSE	<1.00
2-MPK-RM3-BB	2/21/2022	RM 3	<1.00
3-MPK-RM2-BB	2/21/2022	RM 2	<1.00
4-MPK-K-S	2/21/2022	KITCHEN	<1.00
5-MPK-RM4-BB	2/21/2022	RM 4	<1.00
8-MPK-RM10-BB	2/21/2022	RM 10	<1.00
9-MPK-RM7-BB	2/21/2022	RM 7	<1.00
10-MPK-RM11-BB	2/21/2022	RM 11	<1.00
11-MPK-RM12-BB	2/21/2022	RM 12	<1.00
12-MPK-RM13-BB	2/21/2022	RM 13	<1.00
13-MPK-RM14-B	2/21/2022	RM 14	<1.00
15-MPK-RM16-BB	2/21/2022	RM 16	<1.00
16-MPK-SR-S	2/21/2022	SUNROOM	<1.00
14-MPK-RM15-BB	2/21/2022	RM 15	<1.00

Montclair High School

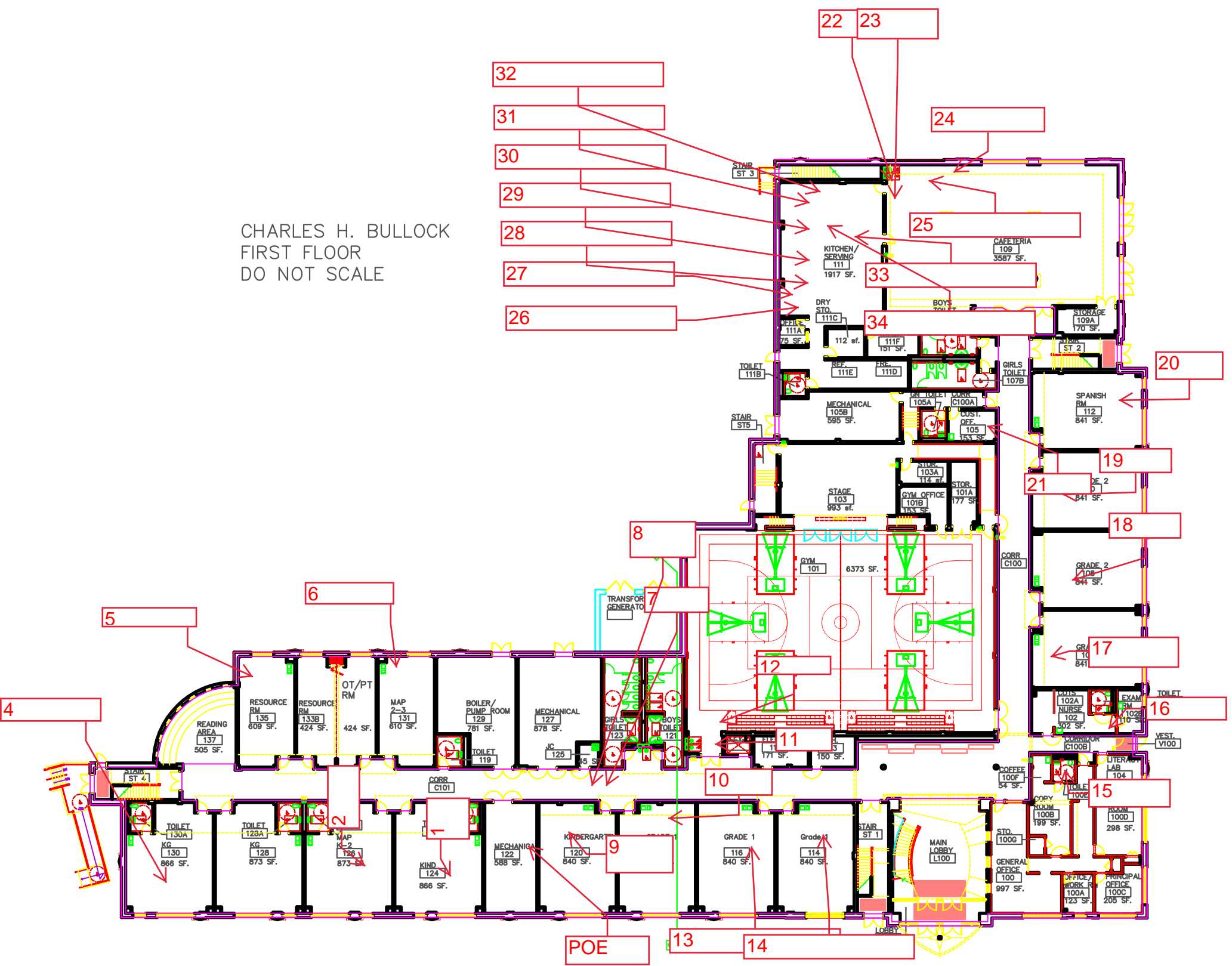
Sample ID	Collection Date	Collection Location	Concentration ug/L (ppb)
2-MHS-GB-BF	2/20/2022	HALL G FLOOR GB	<1.00
3-MHS-G1-DF	2/20/2022	G FLOOR GIRLS LOCKER ROOM	<1.00
4-MHS-G1-DF	2/20/2022	BOYS LOCKER GROUND FLOOR	1.15
5-MHS-BL-WC	2/20/2022	G FLOOR BOYS LOCKER ROOM	3.76
10-MHS-16-BF	2/20/2022	HALL 16	<1.00
17-MHS-MG-BF	2/20/2022	MAIN GYM	<1.00
19-MHS-MG-BF	2/20/2022	MAIN GYM	<1.00
23-MHS-TR-IM	2/20/2022	TRAINERS ROOM	<1.00
23-MHS-TR-D1	2/20/2022	TRAINERS ROOM	<1.00
24-MHS-K-S1	2/20/2022	KITCHEN	78.5
25-MHS-K-S2	2/20/2022	KITCHEN	1.24
27-MHS-K-S4	2/20/2022	KITCHEN	<1.00
28-MHS-K-S5	2/20/2022	KITCHEN	1.08
26-MHS-K-S3	2/20/2022	KITCHEN	<1.00
31-MHS-R109-BF	2/20/2022	R109	<1.00
34-MHS-N-S2	2/20/2022	NURSE	7.88
35-MHS-N-S2	2/20/2022	NURSE	<1.00
37-MHS-R207-BF	2/20/2022	R207	<1.00
38-MHS-R219-WC	2/20/2022	R219	<1.00
40-MHS-R213-BF	2/20/2022	R213	<1.00
43-MHS-R317-BF	2/20/2022	R317	<1.00
44-MHS-R312-BF	2/20/2022	R312	<1.00
46-MHS-OLD KITCHEN-S	2/20/2022	KITCHEN	5.34
47-MHS-KITCHEN-S	2/20/2022	KITCHEN	<1.00
48-MHS-K-S	2/20/2022	KITCHEN	1.31
49-MHS-SR-S	2/20/2022	SUNROOM	<1.00

May 3rd , 2022 All Results:

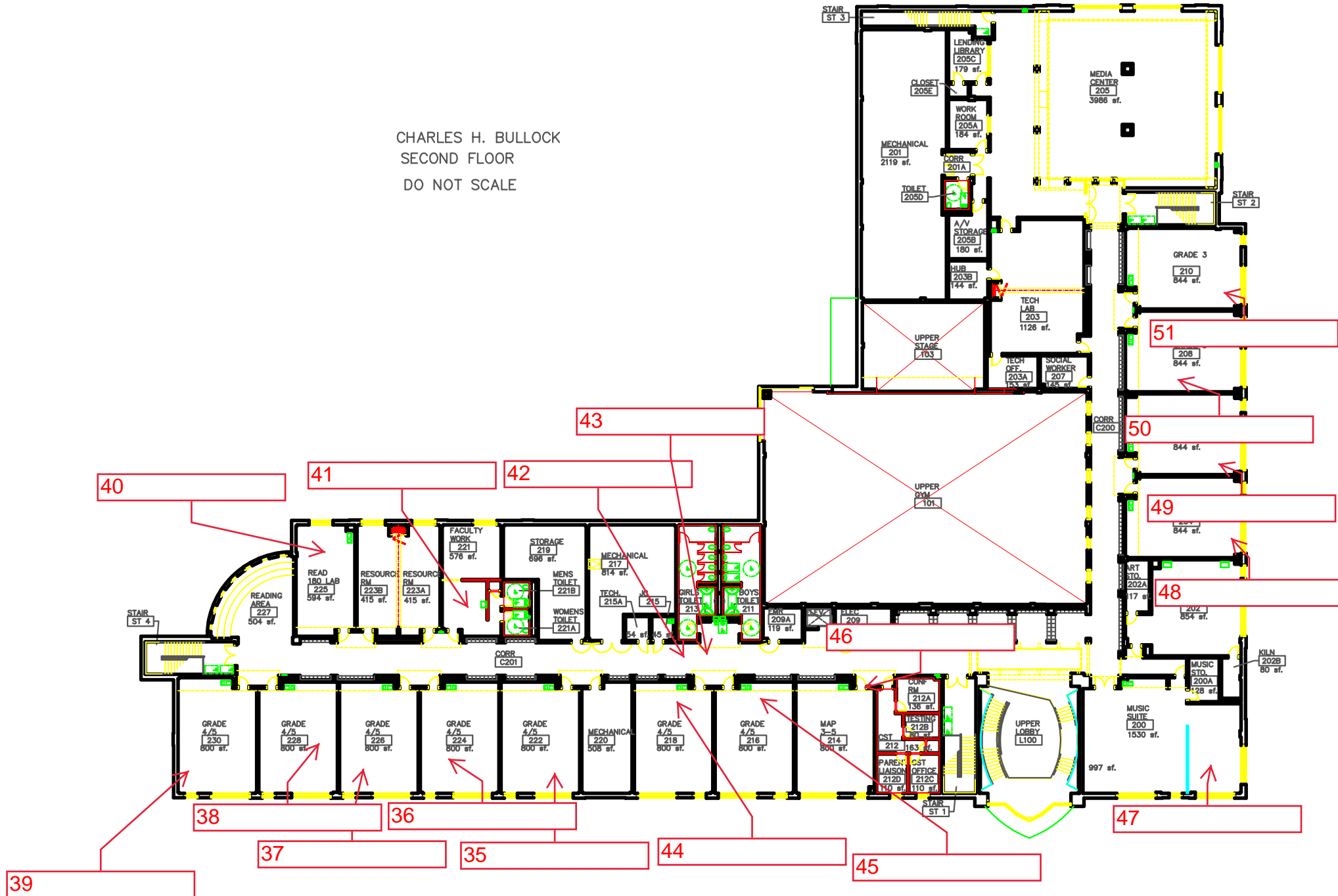
Building	Date Collected	Sample ID	Sample Location	Concentration ppb
North East	5/03/2022	5-NE-RM13-OF	RM 13	3.12
North East	5/03/2022	NE-BB-SR	Sun Room	<1.00
High School	5/03/2022	24-MHS-K-S1	Kitchen Sink	<1.00
High School	5/03/2022	MHS-S-SR	Sun Room	<1.00
Hillside	5/03/2022	11-H-R104-S1	R104	4.79
Hillside	5/03/2022	12-H-R104-S2	R104	5.94
Hillside	5/03/2022	14-H-R104-S3	R104	20.9
Hillside	5/03/2022	H-WC-SR	Sun Room	<1.00
Charles H. Bullock	5/03/2022	29-CB-K-PF	Kitchen	24.2
Charles H. Bullock	5/03/2022	34-CB-K-PF	Kitchen	15.7
Charles H. Bullock	5/03/2022	CB-WC-SR	Sun Room	<1.00

Appendix D Floor Plan(s)

CHARLES H. BULLOCK
FIRST FLOOR
DO NOT SCALE



CHARLES H. BULLOCK
SECOND FLOOR
DO NOT SCALE



CHARLES H. BULLOCK
FIRST FLOOR
DO NOT SCALE

1 2 3 4 5 6 7 8 9 10 11 12 13 14 15 16 17 18 19 20 21 22 23 24 25 26 27 28 29 30 31 32 33 34

POE

CHARLES H. BULLOCK
FIRST FLOOR
DO NOT SCALE

POE

13 14

CHARLES H. BULLOCK
FIRST FLOOR
DO NOT SCALE

32

31

30

29

28

27

26

25

24

23

22

21

20

19

18

17

16

15

14

13

12

11

10

9

8

7

6

5

4

POE

STAIR ST 3

KITCHEN/ SERVING 111 1917 SF.

CAFETERIA 109 3587 SF.

DRY STO. 111C

BOYS TOILET

STORAGE 109A 170 SF.

STAIR ST 2

GIRLS TOILET 107B

SPANISH RM 112 841 SF.

MECHANICAL 105B 595 SF.

STAGE 103 983 SF.

GYM 101 6373 SF.

GYM OFFICE 101B 177 SF.

STOR. 103A 114 SF.

STOR. 101A 177 SF.

STAIR ST 5

TOILET 111B

REF. 111E

FR. 111D

GR. TOILET CURR. 105A

CUST. OFF. 105 153 SF.

GRADE 2 108 844 SF.

GRADE 1 116 840 SF.

GRADE 1 114 840 SF.

STAIR ST 1

MAIN LOBBY L100

STO. 100G 199 SF.

GENERAL OFFICE 100 997 SF.

OFFICE WORK R. 100A 123 SF.

PRINCIPAL OFFICE 100C 205 SF.

ROOM 100B 199 SF.

TOILET 100E

CORRIDOR C100B

LITERARY LAB 104

TOILET 102A

NURSE 102 110 SF.

EXAM 102B 110 SF.

TOILET 102C 110 SF.

VEST. V100

READING AREA 137 505 SF.

RESOURCE RM 135 609 SF.

RESOURCE RM 133B 424 SF.

OT/PT RM 424 SF.

MAP 2-3 131 610 SF.

BOILER/ PUMP ROOM 129 761 SF.

MECHANICAL 127 878 SF.

JC 125 45 SF.

GIRLS TOILET 123

BOYS TOILET 121

TOILET 119

CORR C101

TOILET 120A

KG 128 873 SF.

MAP K-2 126 873 SF.

KIND 124 866 SF.

MECHANICAL 122 588 SF.

KINDERGART 120 840 SF.

TOILET 130A

KG 130 866 SF.

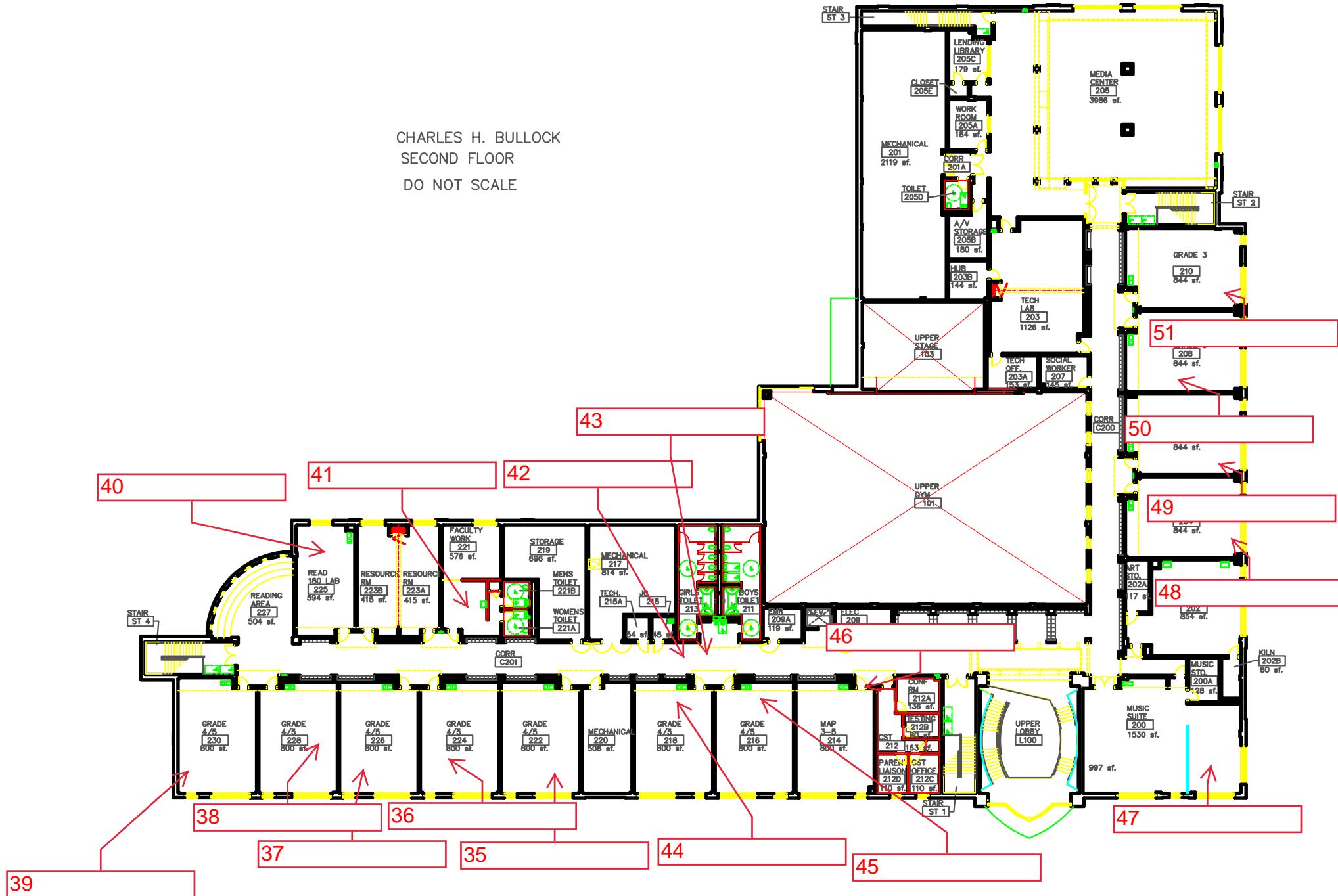
TRANSFORMER GENERATOR

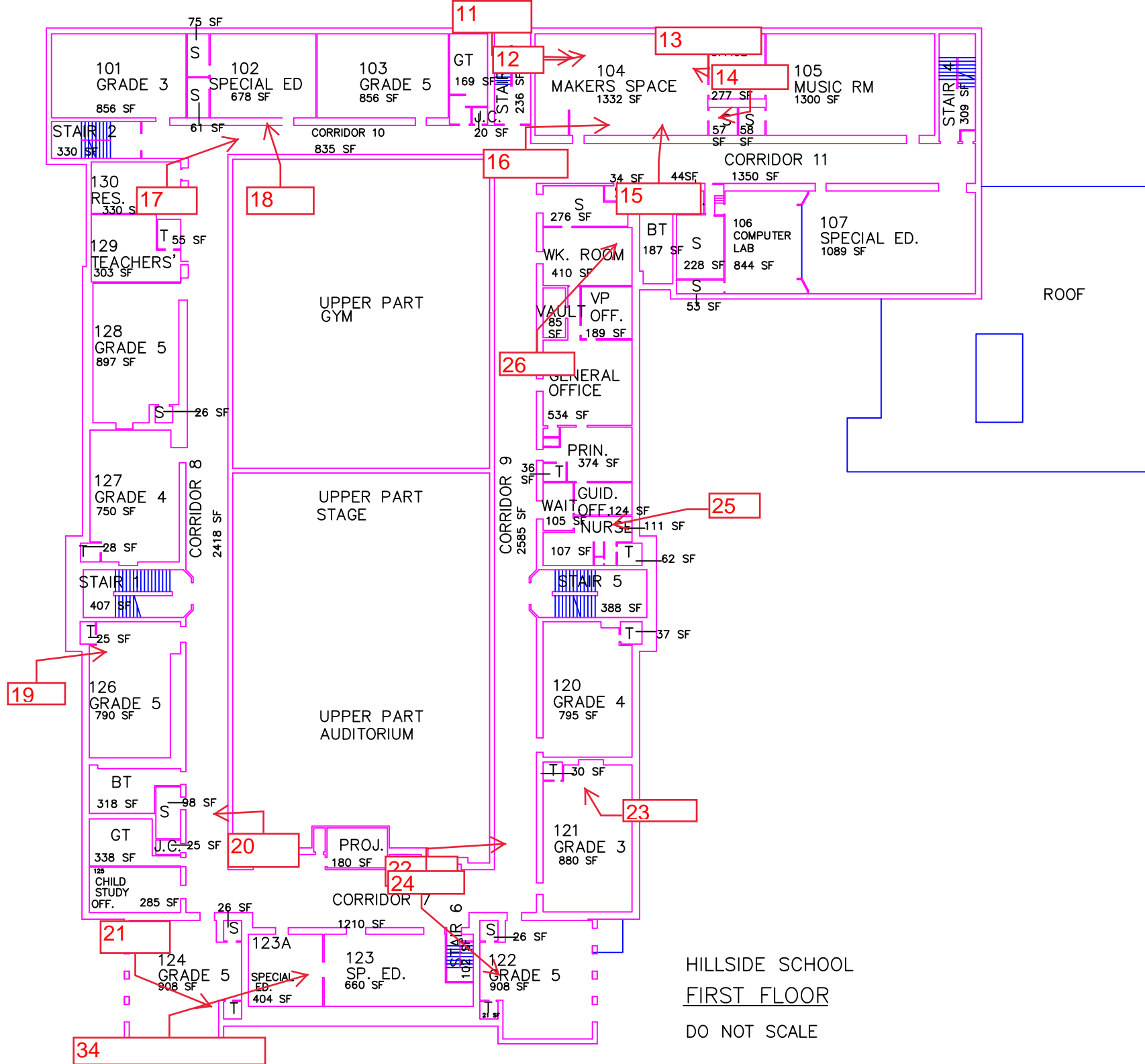
STAIR ST 4

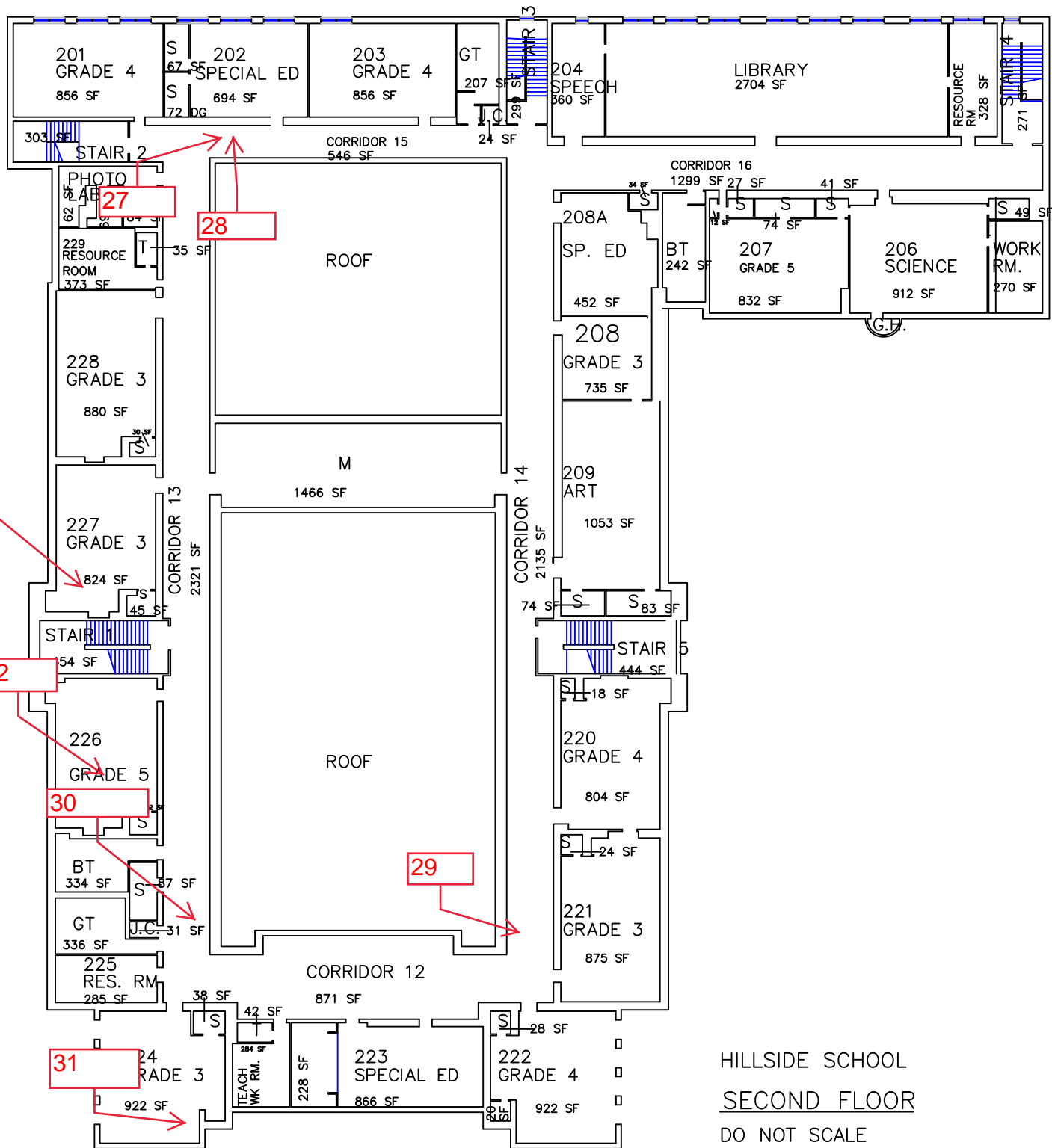
CHARLES H. BULLOCK
FIRST FLOOR
DO NOT SCALE

POE

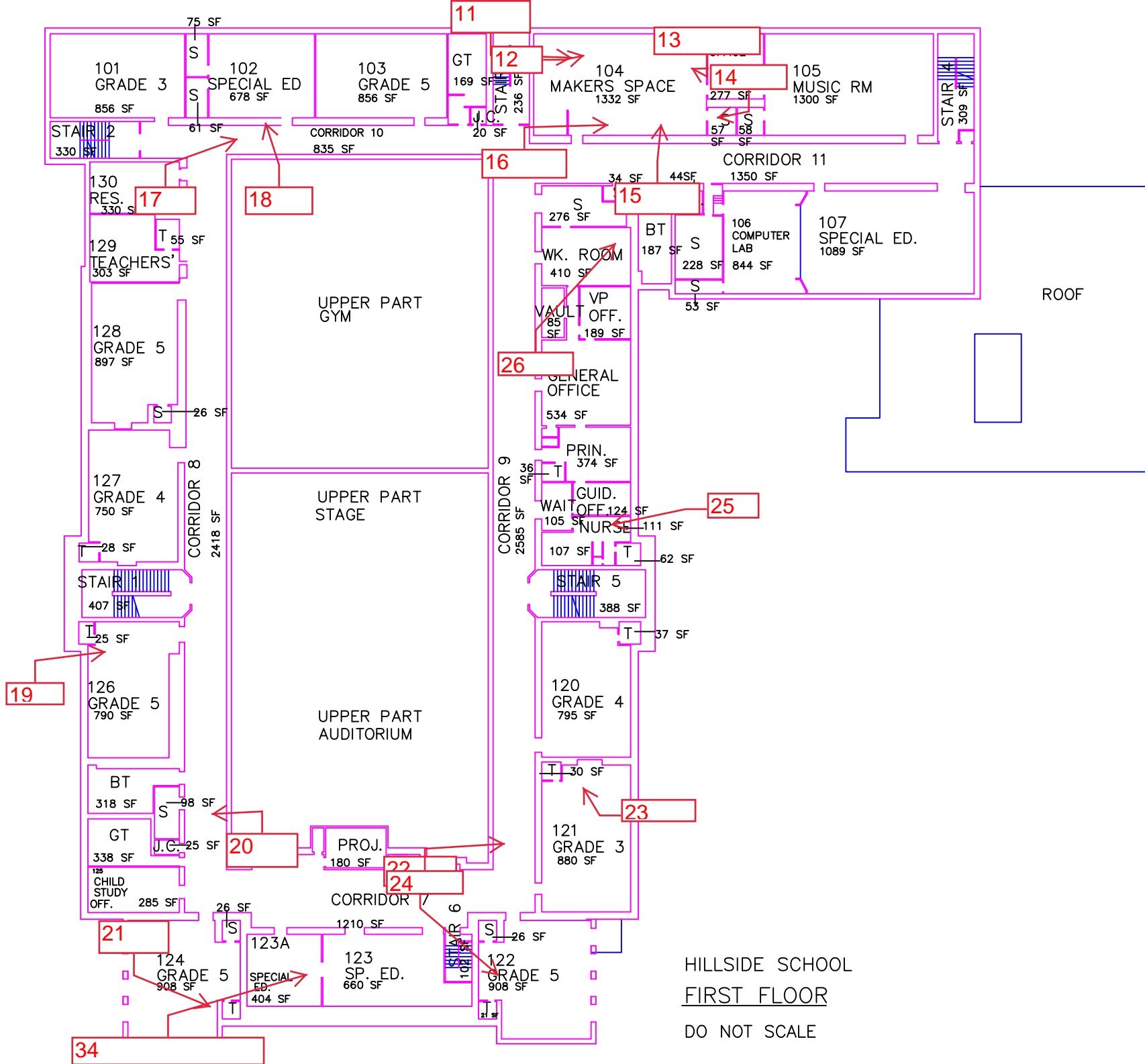
CHARLES H. BULLOCK
SECOND FLOOR
DO NOT SCALE



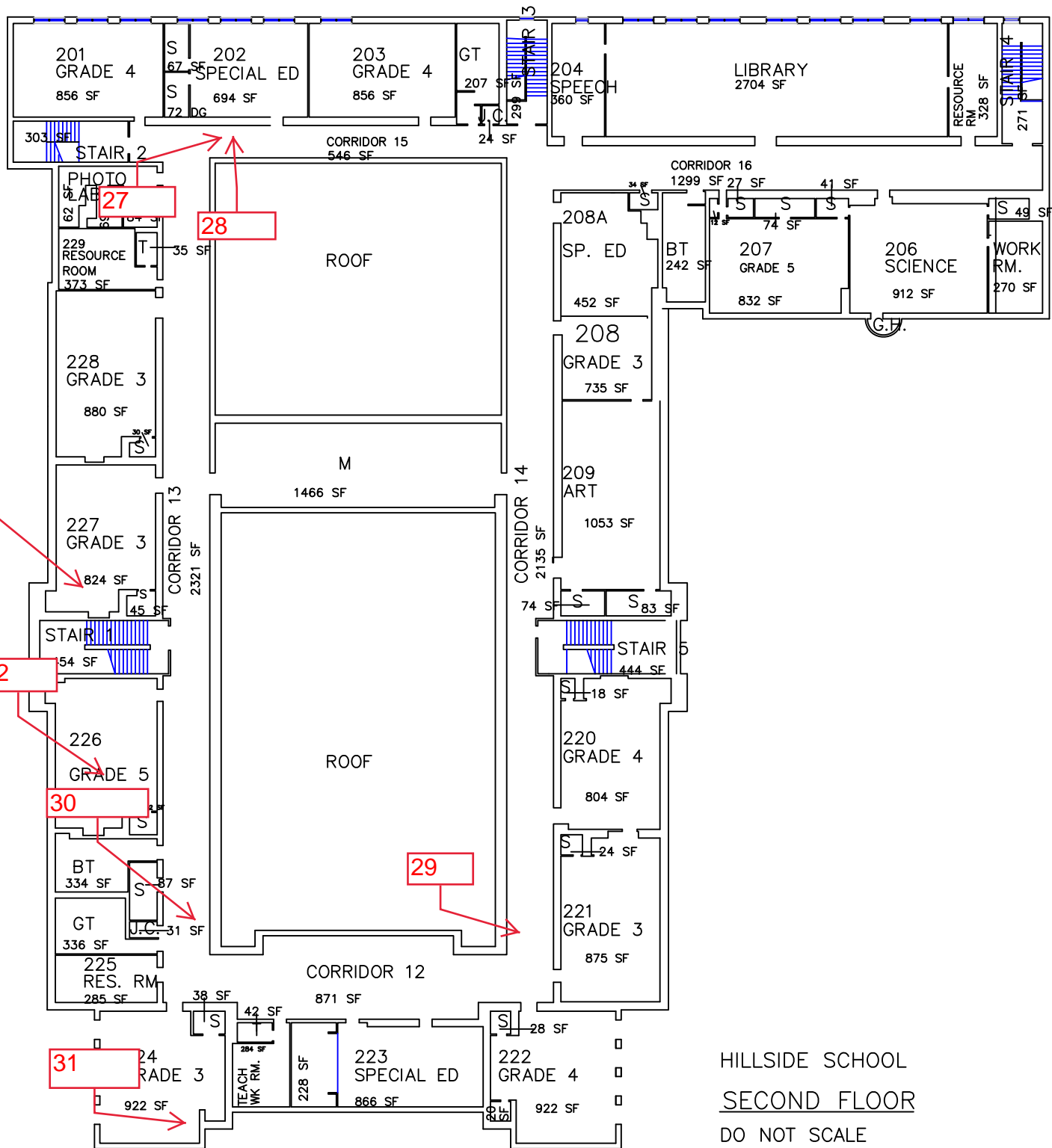




HILLSIDE SCHOOL
SECOND FLOOR
 DO NOT SCALE

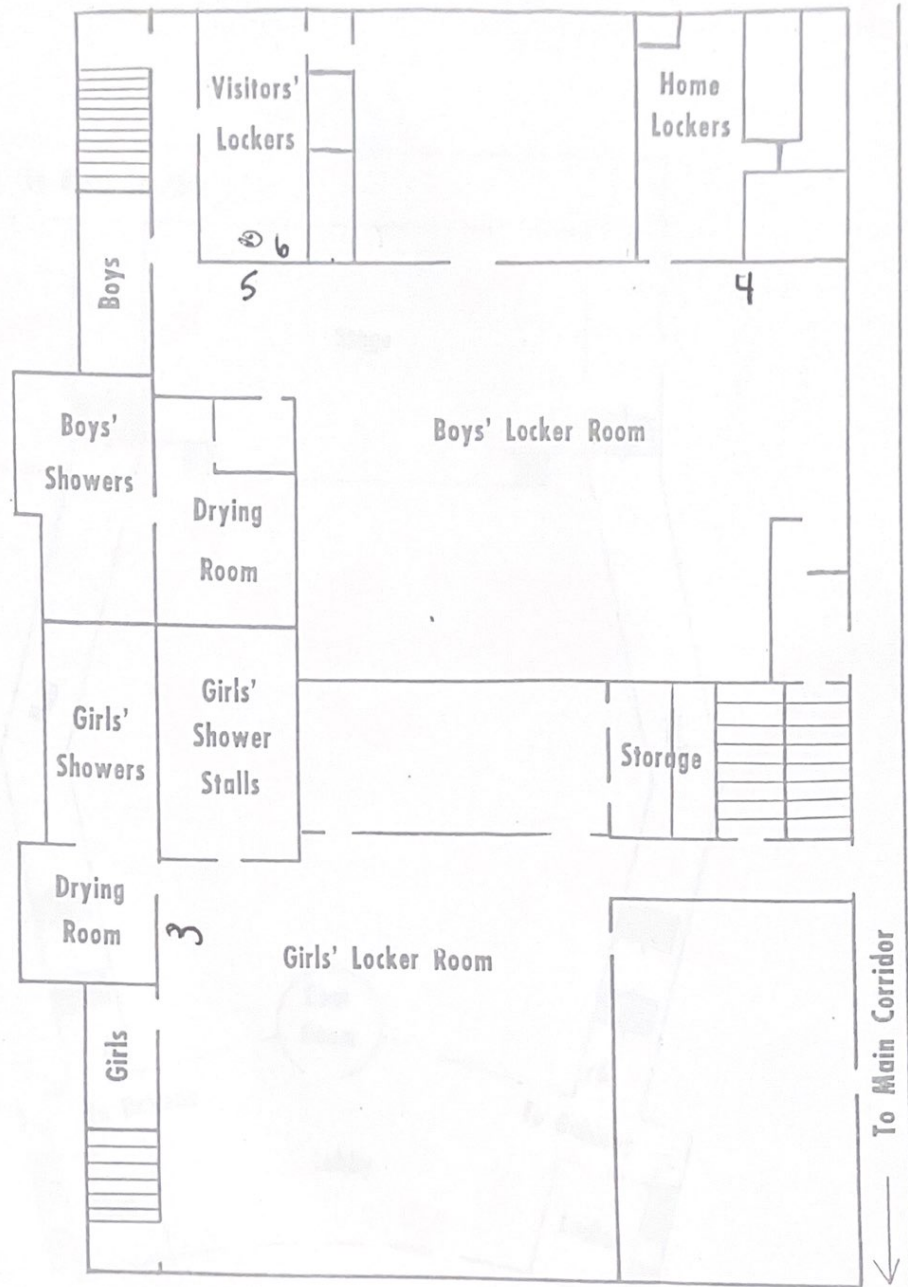


HILLSIDE SCHOOL
FIRST FLOOR
DO NOT SCALE

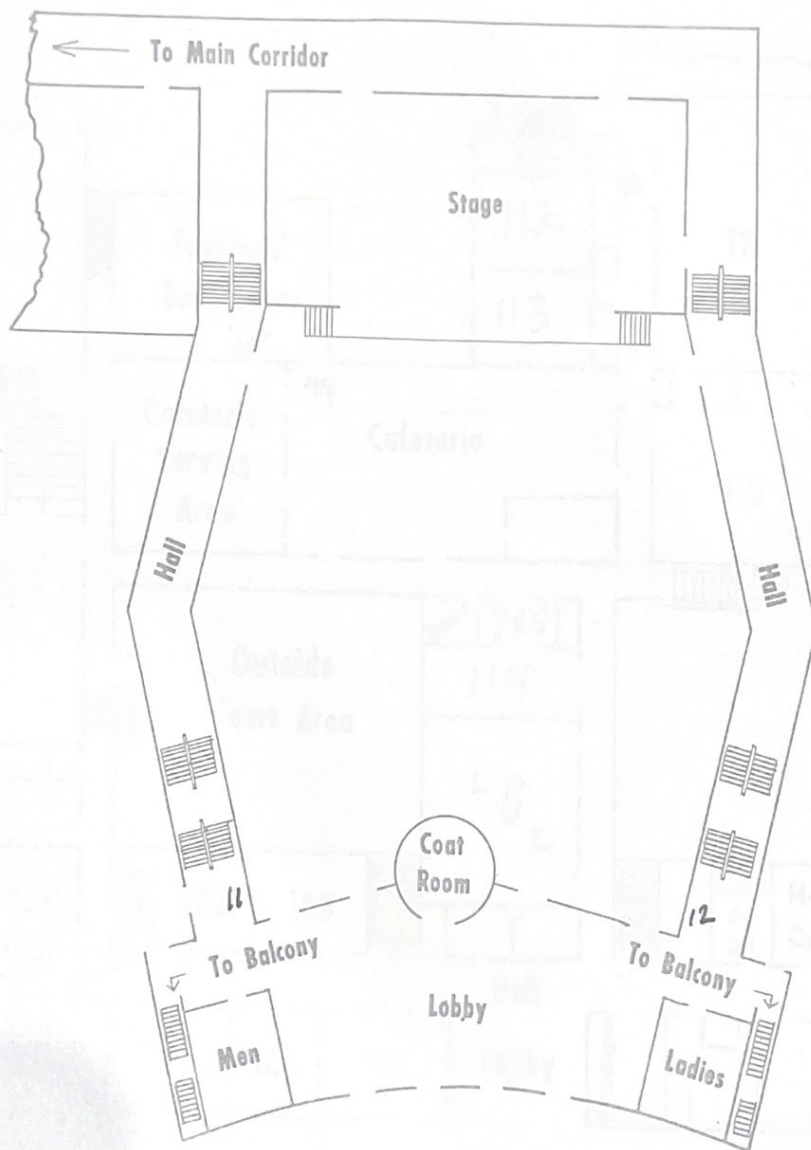


HILLSIDE SCHOOL
SECOND FLOOR
DO NOT SCALE

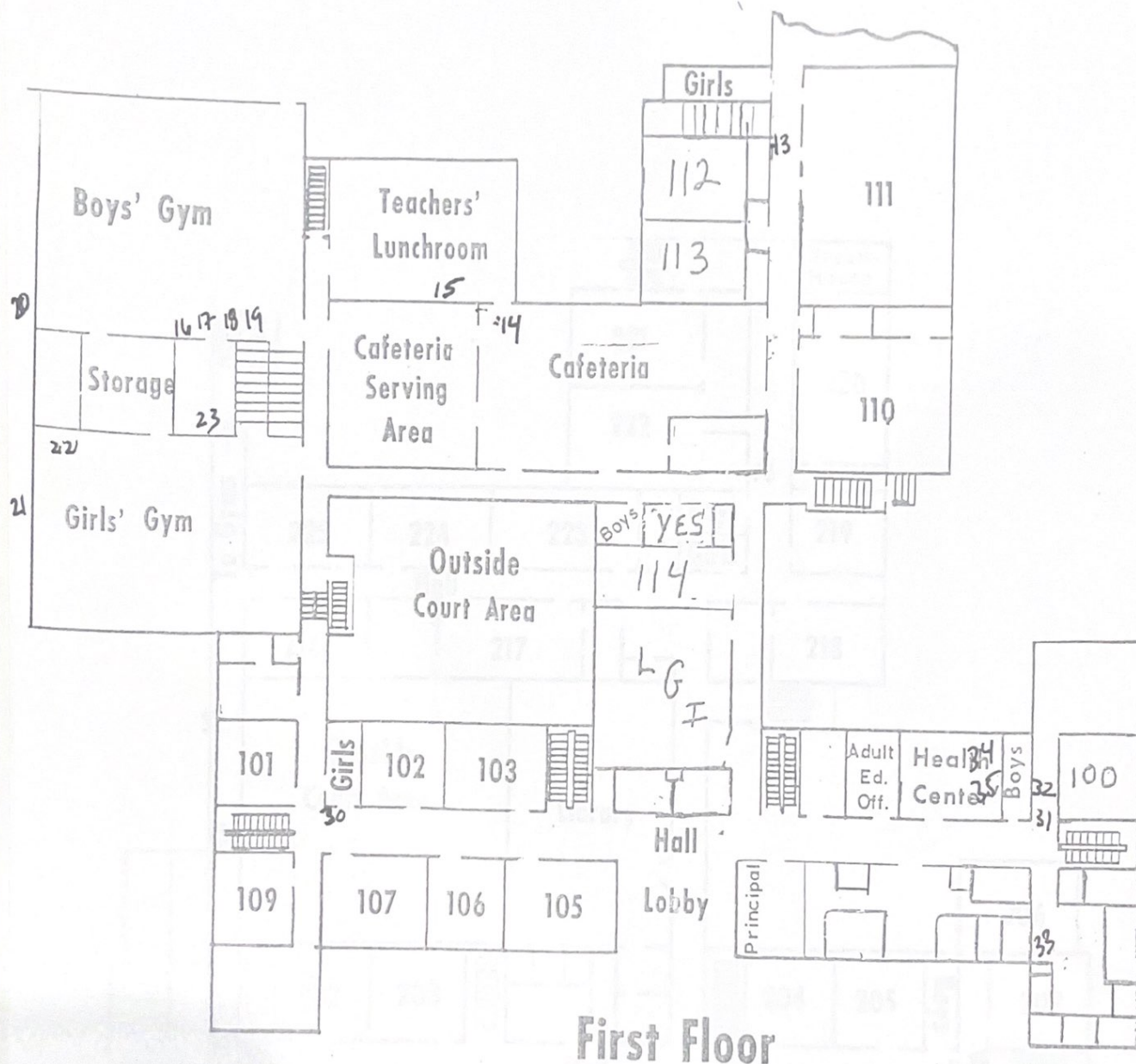




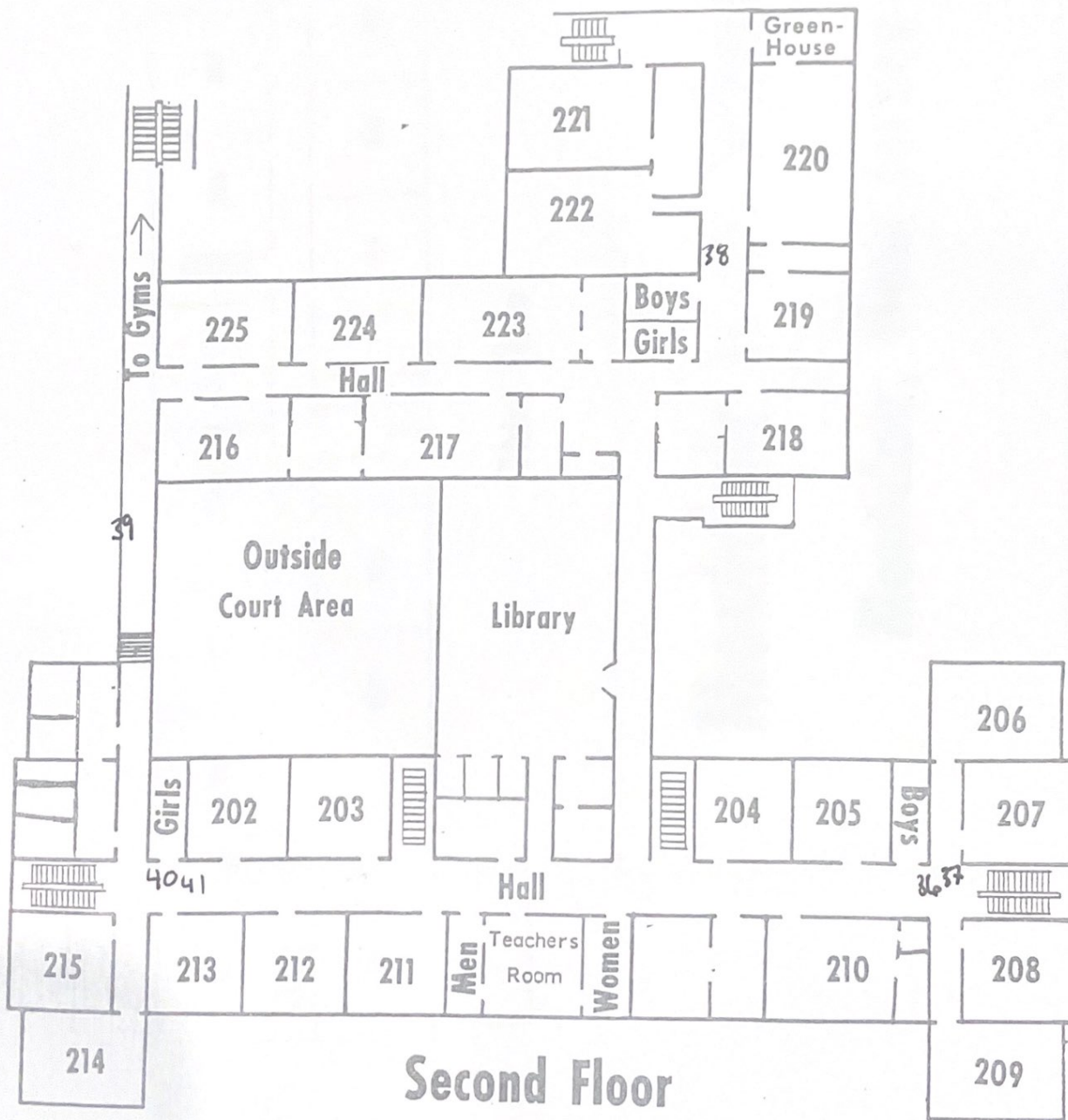
Gymnasium

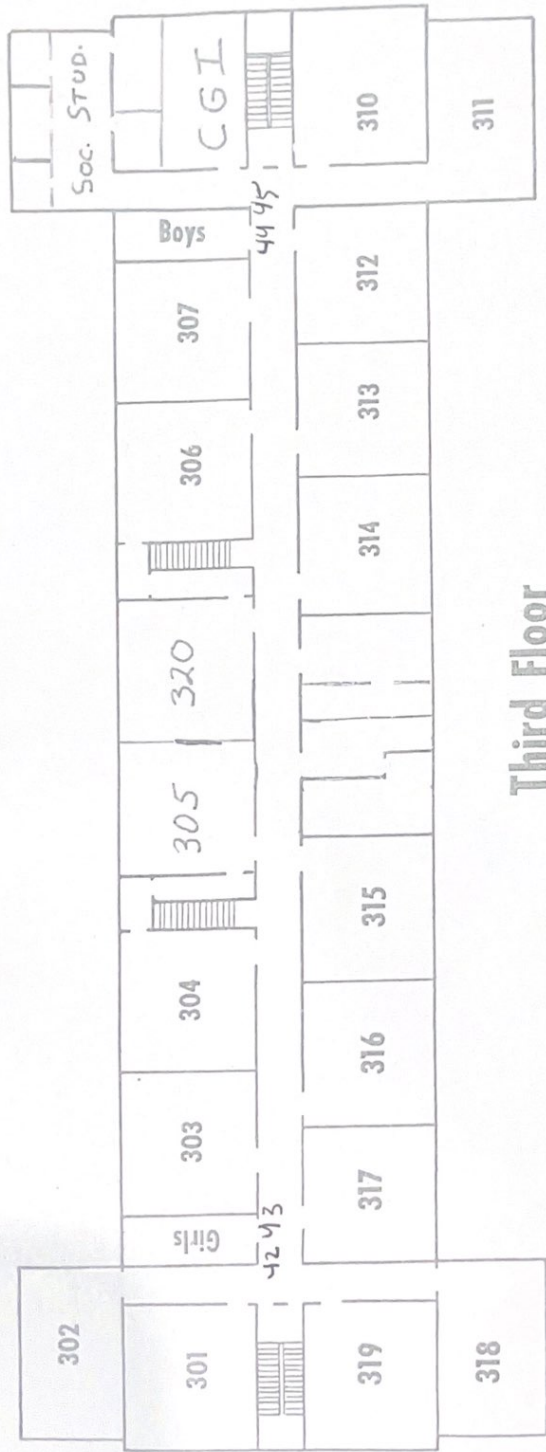


First Floor
Auditorium



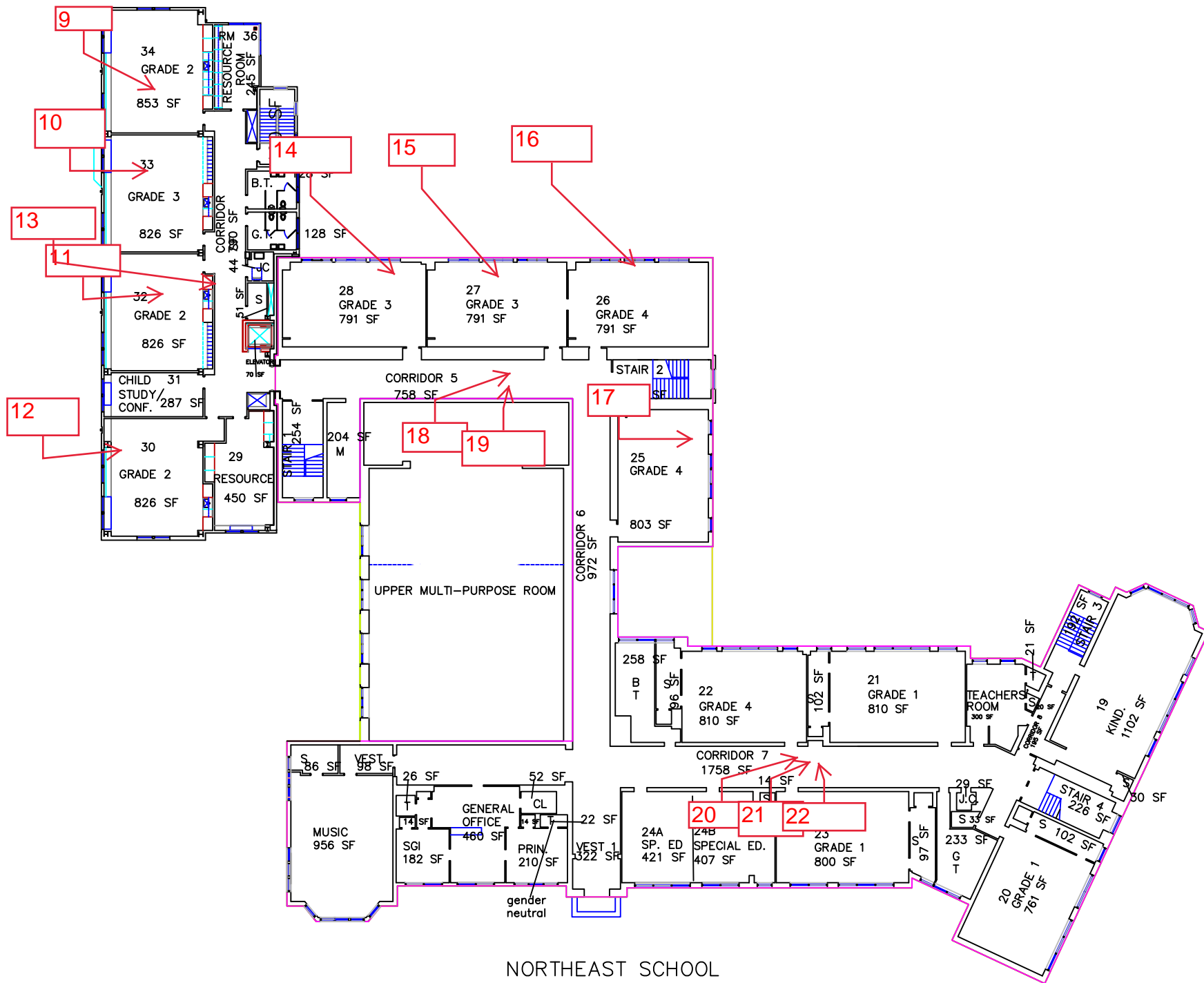
Second Floor





Montclair High School

Montclair, New Jersey



NORTHEAST SCHOOL
FIRST FLOOR
DO NOT SCALE



Appendix E Laboratory Data



Environmental Hazards Services, L.L.C.
7469 Whitepine Rd
Richmond, VA 23237
Telephone: 800.347.4010

Lead in Drinking Water Analysis Report

Client: LEW Corp
181 US Hwy 46
Mine Hill, NJ 07803

Report Number: 22-05-01084

Received Date: 05/05/2022
Reported Date: 05/11/2022
Sampled By: Marwan Khater
Tech Certification #:

Project/Test Address: 220268; Montclair/North East; 603 Grove St; Montclair, NJ

Client Number:
201327

Laboratory Results

Fax Number:
Ext 18 Melissa

Lab Sample Number	Client Sample ID	Collection Date	Collection Location	Concentration ug/L (ppb)	Analysis Date	Narrative ID
22-05-01084-001	5-NE-RM13-OF	05/03/2022	RM 13	3.12	05/10/2022	
22-05-01084-002	NE-BB-SR	05/03/2022	SUN ROOM	<1.00	05/10/2022	

Method: EPA 200.8
Analyst: Anthony Dee
Accreditation #: NJ VA008

Reviewed By Authorized Signatory:

Melissa Kanode

Melissa Kanode

QA/QC Clerk

Sample Results denoted with a "less than" (<) sign contain less than the reporting limit which is 1 ppb.

The EPA Maximum Contaminant Level for Lead in Drinking Water is 15 ppb. The results herein conform to NELAC standards, where applicable, unless otherwise narrated on this report. Results represent the analysis of samples submitted by the client. Sample location, description, field parameter results, etc., were provided by the client. This report cannot be reproduced, except in full, without written approval from Environmental Hazards Services, L.L.C.

LEGEND ug/L= micrograms per liter ppb = parts per billion



EHS Laboratories
ENVIRONMENTAL HAZARDS SERVICES, LLC

Water Chain-of-Custody Form

SHIP TO: 7469 Whitepine Rd. Richmond, VA 23237
Phone: (800) 347-4010 FAX: (804) 275-4907
ONLINE CLIENT PORTAL AVAILABLE FOR ANALYSIS RESULTS AT: www.leadlab.com

Company Name: LEW CORP

Account #: 201327

Address: 181 US Highway 46

City/State/Zip: Mine Hill, NJ 07803

Phone: (908-654-8068)

Email: labresults@lewcorp.com

Fax: 908-654-8069

Due Date:
05/12/2022
(Thursday)
AE



22-05-01084

AMK

Project Name / Collection Address: Montclair / North East 603 gravel

City/State/Zip: Montclair NJ

Project #: 220268

Sampled By: Marwan Khater

License # (if Required):

Water Source: (Check One) Public ☒ Well ☐

Well Tag # (if Applicable):

☒ 5 Day Turnaround

☐ 3 Day Turnaround

☐ 2 Day Turnaround

☐ 1 Day Turnaround * Call Ahead

No.	Client Sample ID	Collection Location (Ex: Kitchen Sink)	Collection Date	Collection Time	Metals			Field Parameters		LAB USE
					Lead	Copper	Other	Field pH at time of Collection:	Temp. at time of Collection:	
1	5-NE-RM13-0F	RM 13	5/13/22	6	AM/PM	X				
2	NE-BB-SK	Sun room			AM/PM					
3					AM/PM					
4					AM/PM					
5					AM/PM					
6					AM/PM					
7					AM/PM					
8					AM/PM					
9					AM/PM					
10					AM/PM					

Released by: Marwan Khater Signature: Marwan Khater Date/Time: 5/13/22

Released by: _____ Signature: _____ Date/Time: _____

Rec: Amy Veynar

5/15/22 11:32 AM



Environmental Hazards Services, L.L.C.
7469 Whitepine Rd
Richmond, VA 23237
Telephone: 800.347.4010

Lead in Drinking Water Analysis Report

Client: LEW Corp
181 US Hwy 46
Mine Hill, NJ 07803

Report Number: 22-05-01091
Received Date: 05/05/2022
Reported Date: 05/11/2022
Sampled By: Marwan Khater
Tech Certification #:

Project/Test Address: 220268; Montclair/High School; 100 Chestnut St; Montclair, NJ

Client Number:
201327

Laboratory Results

Fax Number:
Ext 18 Melissa

Lab Sample Number	Client Sample ID	Collection Date	Collection Location	Concentration ug/L (ppb)	Analysis Date	Narrative ID
22-05-01091-001	24-MHS-K-S1	05/03/2022	KITCHEN SINK	<1.00	05/10/2022	
22-05-01091-002	MHS-S-SR	05/03/2022	SUN ROOM	<1.00	05/10/2022	

Method: EPA 200.8
Analyst: Anthony Dee
Accreditation #: NJ VA008

Reviewed By Authorized Signatory:

Melissa Kanode

Melissa Kanode
QA/QC Clerk

Sample Results denoted with a "less than" (<) sign contain less than the reporting limit which is 1 ppb.

The EPA Maximum Contaminant Level for Lead in Drinking Water is 15 ppb. The results herein conform to NELAC standards, where applicable, unless otherwise narrated on this report. Results represent the analysis of samples submitted by the client. Sample location, description, field parameter results, etc., were provided by the client. This report cannot be reproduced, except in full, without written approval from Environmental Hazards Services, L.L.C.

LEGEND ug/L= micrograms per liter ppb = parts per billion



Due Date:
05/12/2022
(Thursday)
AE

(Handwritten initials: MK)

Company Name: LEW CORP Account #: 201327

Address: 181 US Highway 46 City/State/Zip: Mine Hill, NJ 07803

Phone: (908-654-8068) Email: labresults@lewcop.com Fax: 908-654-8069

Project Name / Collection Address: Montclair - /highschool 100 chestnut st City/State/Zip: Montclair NJ
(Required) (Required)

Project #: 200268 Sampled By: Marwan Khater License # (If Required): _____

Water Source: (Check One) Public X Well _____ Well Tag # (If Applicable): _____
(Required)

<input checked="" type="checkbox"/> 5 Day Turnaround	<input type="checkbox"/> 3 Day Turnaround	<input type="checkbox"/> 2 Day Turnaround	<input type="checkbox"/> 1 Day Turnaround * Call Ahead
---	--	--	---

No.	Client Sample ID	Collection Location (Ex: Kitchen Sink)	Collection Date	Collection Time	Metals			Field Parameters		LAB USE
					Lead	Copper	Other	Field pH at time of Collection:	Temp. at time of Collection:	Temp at Time of Receipt:
1	24-MHS-K-S1	Kitchen sink	5/3/22 ↓	6:00 ↓ AM/PM	X					
2	MHS-S-SK	Sun room			X					
3				AM / PM						
4				AM / PM						
5				AM / PM						
6				AM / PM						
7				AM / PM						
8				AM / PM						
9				AM / PM						
10				AM / PM						

Released by: Marwan Khater

Signature: Marwan Khater

Date/Time: 5/3/22

Released by:

Signature:

Date/Time:

Rec: Amy Vohar

(Handwritten signature)

5/5/22 11:43 AM



Environmental Hazards Services, L.L.C.
7469 Whitepine Rd
Richmond, VA 23237
Telephone: 800.347.4010

Lead in Drinking Water Analysis Report

Client: LEW Corp
181 US Hwy 46
Mine Hill, NJ 07803

Report Number: 22-05-01117

Received Date: 05/05/2022
Reported Date: 05/11/2022
Sampled By: Marwan Khater
Tech Certification #:

Project/Test Address: 220268; Montclair/Hillside; 54 Orange Rd; Montclair, NJ

Client Number:
201327

Laboratory Results

Fax Number:
Ext 18 Melissa

Lab Sample Number	Client Sample ID	Collection Date	Collection Location	Concentration ug/L (ppb)	Analysis Date	Narrative ID
22-05-01117-001	11-H-R104-S1	05/03/2022	R104	4.79	05/10/2022	
22-05-01117-002	12-H-R104-S2	05/03/2022	R104	5.94	05/10/2022	
22-05-01117-003	14-H-R104-S3	05/03/2022	R104	20.9	05/10/2022	
22-05-01117-004	H-WC-SR	05/03/2022	SUN ROOM	<1.00	05/10/2022	

Method: EPA 200.8
Analyst: Anthony Dee
Accreditation #: NJ VA008

Reviewed By Authorized Signatory:

Melissa Kanode

Melissa Kanode

QA/QC Clerk

Sample Results denoted with a "less than" (<) sign contain less than the reporting limit which is 1 ppb.

The EPA Maximum Contaminant Level for Lead in Drinking Water is 15 ppb. The results herein conform to NELAC standards, where applicable, unless otherwise narrated on this report. Results represent the analysis of samples submitted by the client. Sample location, description, field parameter results, etc., were provided by the client. This report cannot be reproduced, except in full, without written approval from Environmental Hazards Services, L.L.C.

LEGEND ug/L= micrograms per liter ppb = parts per billion



EHS Laboratories
ENVIRONMENTAL HAZARDS SERVICES, LLC

Water Chain-of-Custody Form

SHIP TO: 7469 Whitepine Rd. Richmond, VA 23237
Phone: (800) 347-4010 FAX: (804) 275-4907
ONLINE CLIENT PORTAL AVAILABLE FOR ANALYSIS RESULTS AT: www.leadlab.com



22-05-01117

Due Date:
05/12/2022
(Thursday)
AE

Company Name: LEW CORP

Account #: 201327

Address: 181 US Highway 46

City/State/Zip: Mine Hill, NJ 07803

Phone: (908-654-8068)

Email: labresults@lewcorp.com

Fax: 908-654-8069

Project Name / Collection Address: Montclair Hillside 54 Orange Rd

City/State/Zip: Montclair NJ

Project #: 220268

Sampled By: Marwan Khater

City/State/Zip: Montclair NJ

License # (If Required):

Water Source: (Check One) Public ☒ Well ☐

Well Tag # (If Applicable):

☒ 5 Day Turnaround

☐ 3 Day Turnaround

☐ 2 Day Turnaround

☐ 1 Day Turnaround * Call Ahead

No.	Client Sample ID	Collection Location (Ex: Kitchen Sink)	Collection Date	Collection Time	Metals			Field Parameters		LAB USE
					Lead	Copper	Other	Field pH at time of Collection:	Temp. at time of Collection:	
1	11-H-R104-S1	rig	5/3/22	6:00 AM	<input checked="" type="checkbox"/>					
2	12-H-R104-S2	↓								
3	14-H-R104-S3	↓								
4	H-WC-SR	sun room	↓							
5										
6										
7										
8										
9										
10										

Released by: Marwan Khater Signature: Marwan K Date/Time: 5/3/22

Signature: Date/Time:

REC: A. Vennar

[Signature]

5/5/22 3:49PM



Environmental Hazards Services, L.L.C.
7469 Whitepine Rd
Richmond, VA 23237
Telephone: 800.347.4010

Lead in Drinking Water Analysis Report

Client: LEW Corp
181 US Hwy 46
Mine Hill, NJ 07803

Report Number: 22-05-01108
Received Date: 05/05/2022
Reported Date: 05/11/2022
Sampled By: Marwan Khater
Tech Certification #:

Project/Test Address: 220268; Montclair/Charles H Bullock; 55 Washington St; Montclair, NJ

Client Number:
201327

Laboratory Results

Fax Number:
Ext 18 Melissa

Lab Sample Number	Client Sample ID	Collection Date	Collection Location	Concentration ug/L (ppb)	Analysis Date	Narrative ID
22-05-01108-001	29-CB-K-PF	05/03/2022	KITCHEN	24.2	05/10/2022	
22-05-01108-002	34-CB-K-PF	05/03/2022	KITCHEN	15.7	05/10/2022	
22-05-01108-003	CB-WC-SR	05/03/2022	SUN ROOM	<1.00	05/10/2022	

Method: EPA 200.8
Analyst: Anthony Dee
Accreditation #: NJ VA008

Reviewed By Authorized Signatory:

Melissa Kanode

Melissa Kanode

QA/QC Clerk

Sample Results denoted with a "less than" (<) sign contain less than the reporting limit which is 1 ppb.

The EPA Maximum Contaminant Level for Lead in Drinking Water is 15 ppb. The results herein conform to NELAC standards, where applicable, unless otherwise narrated on this report. Results represent the analysis of samples submitted by the client. Sample location, description, field parameter results, etc., were provided by the client. This report cannot be reproduced, except in full, without written approval from Environmental Hazards Services, L.L.C.

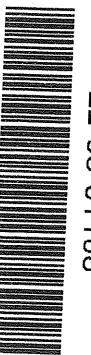
LEGEND ug/L= micrograms per liter ppb = parts per billion



EHS Laboratories
ENVIRONMENTAL HAZARDS SERVICES, LLC

Water Chain-of-Custody Form

SHIP TO: 7469 Whitepine Rd. Richmond, VA 23237
Phone: (800) 347-4010 FAX: (804) 275-4907
ONLINE CLIENT PORTAL AVAILABLE FOR ANALYSIS RESULTS AT: www.leadlab.com



22-05-01108

Company Name: LEW CORP Account #: 201327

Address: 181 US Highway 46 City/State/Zip: Mine Hill, NJ 07803

Phone: (908-654-8068) Email: labresults@lewcorp.com Fax: 908-654-8069

Due Date: 05/12/2022 (Thursday)
AE
101
AMK

Project Name / Collection Address: Montclair / Charles H. Byrd, was hington
City/State/Zip: Montclair NJ
(Required)

Project #: 220268 Sampled By: Marwan Khater License # (If Required):

Water Source: (Check One) Public ☒ Well ☐ Well Tag # (If Applicable):

<input checked="" type="checkbox"/> 5 Day Turnaround	<input type="checkbox"/> 3 Day Turnaround	<input type="checkbox"/> 2 Day Turnaround	<input type="checkbox"/> 1 Day Turnaround * Call Ahead
--	---	---	--

No.	Client Sample ID	Collection Location (Ex: Kitchen Sink)	Collection Date	Collection Time	Metals			Field Parameters		LAB USE
					Lead	Copper	Other	Field pH at time of Collection:	Temp. at time of Collection:	
1	29-CB-K-PF	Kitchen	5/3/22	6:00 PM						
2	34-CB-K-PF									
3	CB-WC-SK	sun room								
4										
5										
6										
7										
8										
9										
10										

Released by: Marwan Khater Signature: Marwan Khater Date/Time: 5/3/22

Released by: Signature: Date/Time:

REC: A. VEJMAR
5/5/22 11:48 AM